



# the**purple**book

T W E E D   S H I R E   E D I T I O N



*Domestic and family violence has a profound impact on individuals and families. We dedicate this resource to everyone who is or has been affected by domestic and family violence.*

**For copies of this booklet please contact:**

**Tweed Shire Domestic Violence Integrated Response Committee (DVIRC)**

c/- Momentum Collective

PO Box 793, Coolangatta, QLD 4225

1300 355 305 (24/7)

Website: [www.mymomentum.org.au](http://www.mymomentum.org.au)

Email: [info@mymomentum.org.au](mailto:info@mymomentum.org.au)

**Domestic Violence Prevention Centre Gold Coast Inc.**

PO Box 409, Southport, QLD 4215

07 5532 9000

Website: [www.domesticviolence.com.au](http://www.domesticviolence.com.au)

Email: [info@domesticviolence.com.au](mailto:info@domesticviolence.com.au)

## **WHAT WE DO**

The Domestic Violence Prevention Centre Gold Coast offers **FREE** counselling, support, information and referral for women and their children who have or are experiencing domestic and family violence.

The Tweed Shire Domestic Violence Integrated Response Committee (DVIRC) is a partnership of community and government agencies that meet regularly and are committed to addressing the problem of domestic and family violence in our community.

This publication is copyright to Domestic Violence Prevention Centre Gold Coast Inc and reprinting or editing is unauthorised without permission.

Graphic Design by Ignite Art & Design - [www.igniteartanddesign.com.au](http://www.igniteartanddesign.com.au)

## **About this Book**

Most people in intimate relationships disagree about things from time to time and this is normal. In a healthy relationship both parties treat each other as equals, both parties should be able to put forward their different points of view or concerns and feel comfortable discussing them together. In a relationship where domestic and family violence is present, it is very different as one person in the relationship uses abuse and/or violence to control the other person through fear.


If you are experiencing domestic violence, getting the right support to be safe is important. At the Domestic Violence Prevention Centre we recognise the challenges and barriers those who experience domestic and family violence may face. The service is free and confidential and provides support, information and referral.

Violence against women and children is never acceptable and cannot be excused for any reason. Women and children who experience it are not to blame for another's violent behaviour.

The Purple Book contains general information that may assist you to make some decisions about your situation, however we recommend that you seek assistance and support. A list of useful numbers and websites is included at the back of the book. This edition of The Purple Book has come about through a collaboration of the Tweed Shire DVIRC and the Domestic Violence Prevention Centre Gold Coast (DVPCGC) Inc. who have been producing The Purple Book since 2015.

We acknowledge the Queensland Government for the original funding for the development of the book. The Purple Book - NSW Tweed Shire Cross Border Edition has been funded with assistance from Legal Aid NSW through the Cooperative Legal Service Delivery Program. The views expressed herein do not necessarily reflect the views of Legal Aid NSW.

We thank DVPCGC for their generosity in giving women in the Tweed Shire and those living along this border of NSW and Queensland access to The Purple Book. We hope you find this resource informative and useful.

Many women who live on the border of New South Wales and Queensland experience particular issues when moving from state to state. When you see this symbol  we have included specific information that might be useful if you are living or moving across the border.

# Contents

## Section 1

Healthy Relationships / Equality Wheel	4 - 5
What is Domestic Violence?	6 - 7
Power and Control Wheel	8 - 9
The Cycle of Violence	10 - 11
Signs of a Abusive Relationship	12 - 16
Effects of Domestic Violence	17
Information for Aboriginal Women	18
Information for women from a CALD Background	18
Women with Disability	18
Information for Women in Same Sex Relationships	19
What about Women who use Violence?	20
Domestic Violence during Pregnancy	21
Effects of Domestic Violence on Children	22
Impact of Domestic Violence on Parenting	23
Children's Domestic Abuse Wheel	24
Child or Adolescent to Mother Abuse	25
Technology Abuse Wheel	26
Staying Safe on Social Media	27
Maintaining your Privacy and Safety	28
Safety Tips for Smartphones	28

## Section 2

<b>If you have left or are thinking about leaving the Relationship</b>	
Leaving a Violent Relationship	30
Post Separation Violence	31
Safety Planning	32 - 33
Accommodation Options	34
Legal Protections	35
Service of a Protection Order	36
Reporting a Breach of the Order	37
Staying Safe	38
Family Law	38
Ongoing Contact with Extended Family	38
Looking After Yourself Emotionally	39 - 40
I feel like I want to return to the relationship	40

## Section 3

<b>If you are still in the Relationship</b>	
Choosing to Stay and being Safe	42
A plan to avoid serious injury during a violent incident	42
Getting Support	43
Legal Protection	44
Child Protection Issues	44
What about Couples Counselling?	45
What about anger management programs?	45
Perpetrator Programs	45 - 46
Coping with Pressure from Friends and Family	46

## 4

Useful Contact Numbers	48 - 51
Useful Websites	52

## Section 1

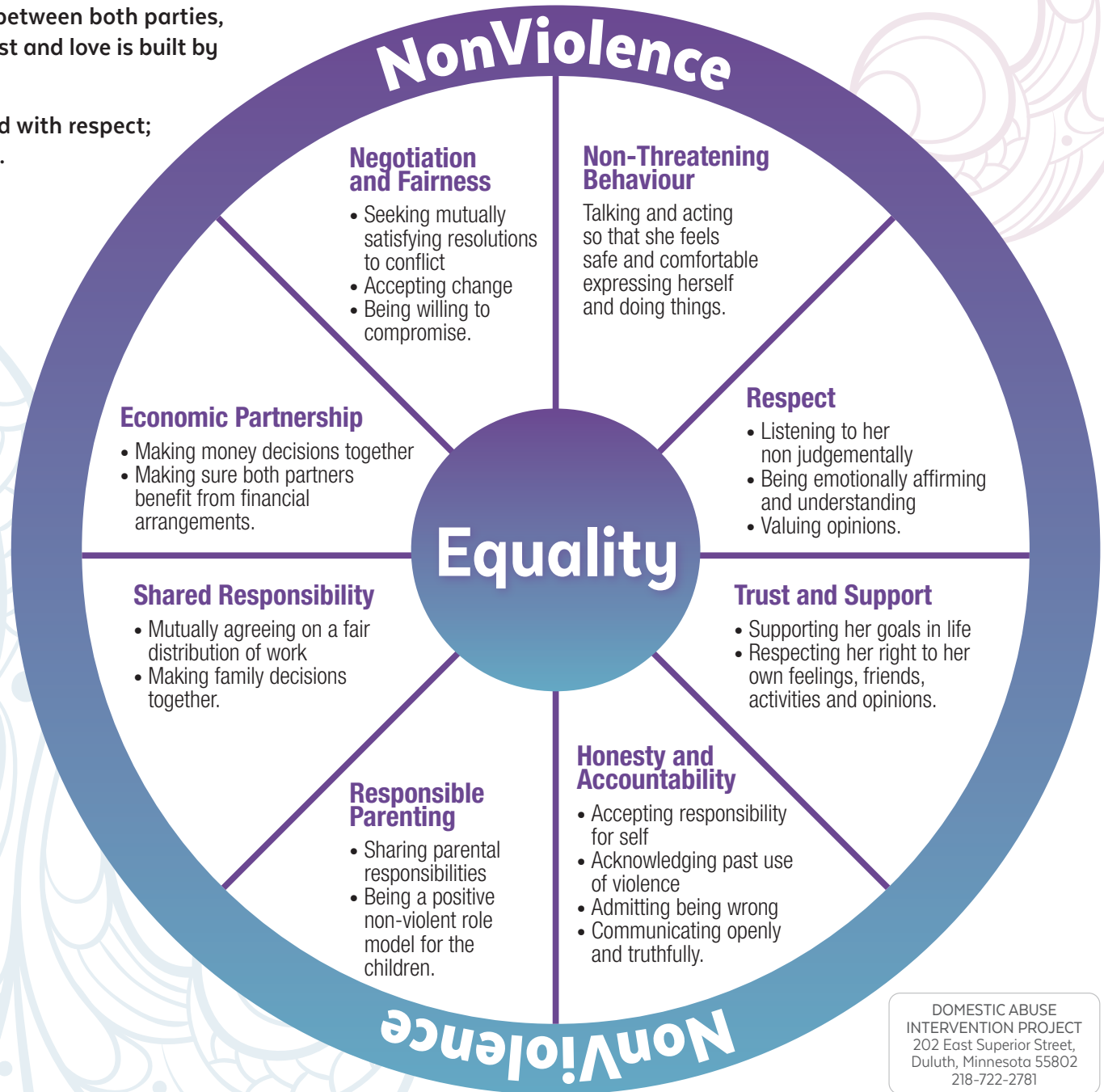


## Healthy Relationships

In a healthy relationship power is shared equally between both parties, neither partner has to be in control of the other. Trust and love is built by equality between the couple.

Both parties feel comfortable, safe and are treated with respect; there is never abuse or violence in the relationship.

## NonViolence Equality Wheel



DOMESTIC ABUSE  
INTERVENTION PROJECT  
202 East Superior Street,  
Duluth, Minnesota 55802  
218-722-2781

## What is Domestic Violence?

**Threats and Intimidation** are key elements in domestic violence and are powerful ways to control you and make you feel powerless and afraid. This can include smashing things, destroying possessions, putting a fist through the wall, handling of guns, knives or other weapons, using intimidating body language (angry looks, raised voice), hostile questioning of, reckless driving of vehicle. They may also threaten to commit suicide or harm or take the children. It may also include harassing you at your workplace, persistent phone calls or sending text messages or emails, following you to and from work, or loitering near your workplace or home.

**Verbal abuse:** Includes screaming, swearing, shouting, put-downs, name-calling, and using sarcasm, ridiculing your beliefs, opinions or cultural background. It is aimed at destroying your sense of self.

**Physical abuse:** Includes pushing, shoving, hitting, slapping, strangulation, hair-pulling, punching etc. and can involve the use of weapons including guns, knives or other objects.

**Emotional abuse:** Behaviour that deliberately undermines your self-esteem and confidence, leading you to believe you are stupid, or 'a bad mother', useless going crazy or are insane. Threats may include harm to you, self, children or others or silence and withdrawal as a means to abuse. This type of abuse humiliates, degrades and demeans.

**Social abuse:** Includes isolating you from your social networks and supports either by preventing you from having contact with family or friends or by verbally or physically abusing you in public or in front of others. It may be continually putting friends and family down so you slowly disconnect from your support network.

**Economic abuse:** Results in you being financially dependent. It includes being denied access to money, including your own, demanding that you and the children live on inadequate resources. It can also include being forced to sign loans and being responsible for debts that you have not incurred.

## What is Domestic Violence?

**Sexual abuse:** Includes a range of unwanted sexual behaviours including forcing or coercing you to watch pornography, forced sexual contact, rape, forcing you to perform sexual acts that cause pain or humiliation, forcing you to have sex with others, or causing injury to your sexual organs.

**Cultural and Spiritual abuse:** Includes ridiculing or putting down your beliefs and culture, preventing you from belonging to, or taking part in a group that is important to your spiritual beliefs, or practising your religion.

### Other forms of abuse may include:

**Controlling behaviours:** Includes dictating what you do, not allowing you to express your feelings or thoughts, not allowing you any privacy, forcing you to go without food or water.

**Separation violence:** Often after the relationship has ended violence may continue, this can be a very dangerous time for you because the perpetrator may perceive a loss of control and may become more unpredictable. During and after separation is often a time when violence will escalate leaving you more unsafe than previously.

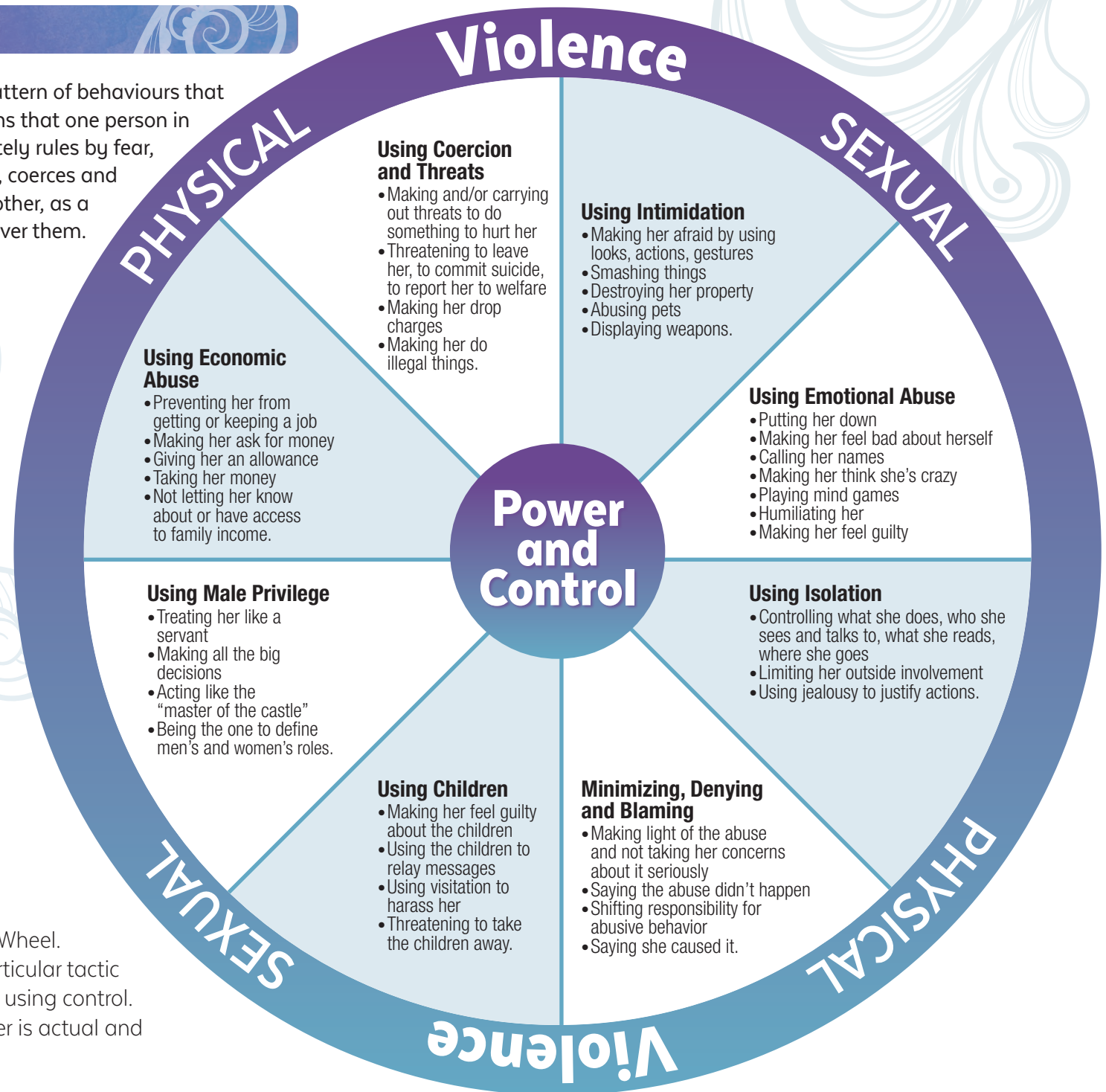
**Stalking:** Stalking includes loitering around places you are known to frequent, watching you, following you, making persistent telephone calls, emails, texts and sending mail including unwanted love letters, cards and gifts.

**Cyber Abuse:** The use of social media, emails or technology to stalk abuse or intimidate you. It might include posting pictures, videos or information about you.

**Spousal homicide:** The death of the victim directly attributed to domestic violence.

## Power & Control Wheel

Domestic violence generally occurs as a pattern of behaviours that are linked by **power and control**. This means that one person in the relationship intentionally and deliberately rules by fear, suppresses the others free will, intimidates, coerces and threatens to or actually does harm to the other, as a way and means to control or have power over them.



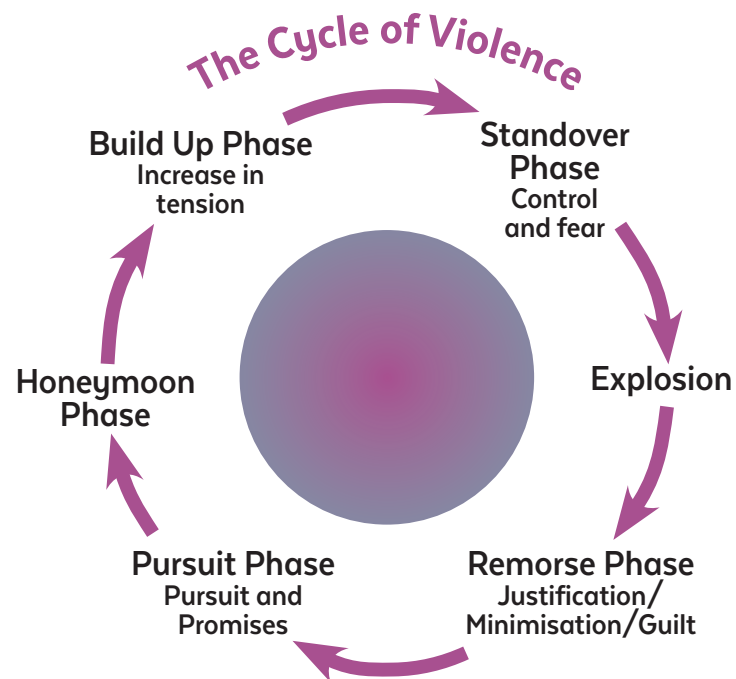
Power and Control is at the centre of the Wheel. Each spoke of the Wheel represents a particular tactic which may be used by the person who is using control. The rim of the Wheel that holds it together is actual and threatened physical and sexual violence.

## Cycle of Violence

Many people who experience domestic violence describe the abuse that they endured as happening in a cycle, meaning that there seems to be a pattern that occurs.

Developed by Dr Lenore Walker in the United States in 1979, the Cycle of Violence illustrates the cyclical nature of abuse and helps to explain how the behaviour of a person using domestic violence can change.

Not all women experience the cycle of violence in the same way and a cycle can take place in a day, a week or over months. Some people may experience some stages of the cycle or not at all.



Source: Lenore Walker (1979) USA

## Cycle of Violence

### The Build Up Phase

Tensions escalate, abuse increases and behaviour is often volatile and unpredictable.

### Stand over Phase

The perpetrators behaviour escalates. You may feel frightened, that you are walking on egg shells and that anything you do will only worsen the situation.

### Explosion

The explosion stage marks the peak of the violence or violent episode.

### Remorse Phase

The perpetrator may feel ashamed or remorseful about what they have done. They may retreat from the relationship and/or attempt to justify their actions.

### Pursuit Phase

In this stage the perpetrator may promise that they will never be violent again. They may become attentive, making promises to change or seek help, give gifts and seek your commitment to the relationship and to them. They may try to rationalise their behaviour, blame work or other stress, or offer to make changes or stop using drugs or alcohol.

### Honeymoon Phase

Both the victim and perpetrator in the relationship may now be in denial about the abuse and may have re-committed to the relationship. They may both choose not to consider the possibility that violence may occur again.

After some time the honeymoon phase will end and the cycle will begin again.

Theories can help us understand complex issues such as domestic and family violence. The cycle of violence is one theory to describe the behaviours that can occur in a relationship where domestic violence is being perpetrated by one person/partner against the other. However, there are other theories that may better align with your experience and understanding of domestic and family violence.

If you are experiencing domestic and family violence, even if it does not conform to the cycle of violence or another theory, we encourage you to speak to a specialist domestic violence support agency.



## Signs of an Abusive Relationship

The following is a checklist of warning signals that may assist you to identify if you are in an abusive relationship.

If you check any of the following boxes, it is likely that your partner may be choosing to use a form of power and control over you, and we encourage you to speak to a specialist domestic violence support agency.

### Emotional and psychological abuse

- ☐ Does your partner call you names or make you feel bad about the way you look?
- ☐ Does your partner verbally degrade your self-worth by constantly putting you down?
- ☐ Has your partner ever humiliated you in front of friends, family or in public?
- ☐ Has your partner ever threatened to have you “committed” or tell others you are crazy?
- ☐ Has your partner ever played mind games with you?

### Physical abuse

- ☐ Has your partner ever pushed, shoved, slapped, pinched, punched, or physically hurt you?
- ☐ Does your partner have a history of using violence with others?
- ☐ Has your partner ever attempted to strangle you or grabbed you around the throat or neck?
- ☐ Has your partner ever physically harmed you while you were pregnant?
- ☐ Has your partner ever stopped you from gaining access to medication/medical assistance?

### Using male privilege

- ☐ Does your partner always see themselves as superior or always right?
- ☐ Does your partner treat you like you a possession that can be owned?
- ☐ Does your partner insist on making all the big decisions?
- ☐ Has your partner ever told you what to wear, read, or restricted where you can go and who you can talk to?
- ☐ Does your partner monitor and control the financial matters including spending, bills, assets, loans and bank accounts?

### Using coercion and threats

- ☐ Does your partner use force or coercion to make you do things against your will?
- ☐ Has your partner threatened to hurt the children, friends, family members or pets?
- ☐ Has your partner threatened to report you to Centrelink, Taxation Department, Immigration, Corrections, Police, Child Safety, Employers or others?
- ☐ Has your partner ever threatened to leave you, harm themselves or commit suicide?
- ☐ Has your partner ever insisted you dress more or less sexually than you want?
- ☐ Has your partner ever threatened to kill you and/or your children?



### Using isolation

- ☐ Does your partner try to control your contact with your family and friends?
- ☐ Does your partner need to know where you are constantly?
- ☐ Does your partner insist that you are always at home, only let you out of the house if they are with you or insist on knowing where you are going?
- ☐ Does your partner monitor or limit your phone calls, conversations and Facebook, internet access, emails?
- ☐ Does your partner check the mileage on the car to see if they can work out where you have been or who you have seen?
- ☐ Does your partner check your browser history, phone calls or messages?

### Sexual abuse

- ☐ Does your partner pressure you to have sex which is unpleasant, pressured or forced?
- ☐ Has your partner ever made you do something very humiliating or degrading?
- ☐ Has your partner ever made you have sex after emotional or physical abuse or when you are sick?
- ☐ Has your partner ever forced you to have unprotected sex?
- ☐ Has your partner ever forced you to engage in sexual practices without your consent?
- ☐ Has your partner ever drugged you, filmed you while having sex, shared images or uploaded sexual images of you to the internet without your consent?
- ☐ Has your partner ever forced you to have sex with objects, others or animals?
- ☐ Has your partner ever forced or coerced you into watching pornography or re-enacting scenes from pornography?
- ☐ Does your partner negatively compare you to women who are featured in videos or photos that are pornographic or sexually explicit?

### Minimising, denying and blaming

- ☐ Does your partner blame you for their anger and violence, saying it was your fault?
- ☐ Does your partner say that you were “asking for it” after physically hitting or abusing you?
- ☐ Does your partner deny using violence afterwards?
- ☐ Does your partner say the violence “wasn’t really that bad”?

### Using Intimidation

- ☐ Does your partner damage or destroy your belongings or break things around the house?
- ☐ Has your partner ever punched holes in the walls or doors?
- ☐ Is your partner easily angered and prone to sudden mood swings?
- ☐ Does your talking to others result in unfounded jealousy and suspicion that is out of proportion?

### Economic abuse

- ☐ Has your partner ever taken away your money or controlled how you spend it?
- ☐ Has your partner ever refused to pay the household bills or to give any money towards them?
- ☐ Has your partner ever threatened to withdraw financial support?
- ☐ Has your partner ever prevented you from working or jeopardised your employment?

## Using the children

- ☐ Has your partner told you that you would lose custody or never see the children again?
- ☐ Does your partner question the children to find out information about you?
- ☐ Has your partner ever forced or manipulated the children into hurting you physically or emotionally?
- ☐ Has your partner ever sought to destroy or undermine your relationship with your children?

## Technology abuse

- ☐ Has your partner ever made you, or made you feel you had to share your passwords with him?
- ☐ Has your partner used technology to track or monitor your movements?
- ☐ Has your partner ever posted embarrassing pictures or sent harassing or threatening messages on Facebook or other social media platforms?
- ☐ Has your partner ever changed your passwords without your consent to stop you having access to accounts?
- ☐ Has your partner ever stopped you from getting or sending emails to family or friends?
- ☐ Has your partner ever used your profile on social media and pretended to be you?

If you are worried about the behaviour of your partner please contact a specialist domestic and family violence service to discuss your concerns.

## Effects of Domestic Violence

Domestic violence can have a significant impact on your health and well-being both in the immediate and longer term, continuing even after the relationship has ended. The psychological consequences of violence can be as serious as the physical effects.

### They may include:

- Physical injuries – such as cuts, scrapes and bruises, fractures, dislocated bones
- Hearing or vision loss
- Miscarriage or early delivery
- Sexually transmitted diseases
- Stress related illnesses
- Depression
- Anxiety
- Sleep disturbances
- Confusion
- Low self esteem
- Concentration difficulties
- Feelings of helplessness
- Alcohol and substance use/misuse
- Hypervigilance
- Difficulty making decisions

If you are concerned about your health please talk to a health professional.

“ There is mounting evidence that domestic violence has long term negative consequences for survivors even after the abuse has ended.

(Campbell et al 2002)

## Information for women...

### Information for Aboriginal women

Aboriginal women continue to report higher levels of physical violence during their lifetime than do non-Aboriginal women.

The close-knit nature of the Aboriginal Community with its kinship networks means that family violence has the potential to affect a wide circle of people. As an Aboriginal woman you may be concerned about shame and the impact speaking about or doing something about the domestic violence on your family and community. Your obligations and loyalties may make it even more difficult to leave.

A specialist Domestic Violence service can provide you with confidential information and support without pressure or judgement about your choices. They can help you work out ways that you and your children can be safer and help you, if you want to, make contact with an Aboriginal support agency.

### Women with a disability

Women with a disability experience domestic and family violence at high rates and may also experience barriers to accessing support or justice outcomes.

Seeking support can be particularly complex particularly when the perpetrator is also your carer or support person. This can also make the decision to leave a violent relationship very difficult.

A specialist Domestic Violence service recognises and understands some of the challenges that a woman with a disability who experiences domestic and family violence may face. They can provide you with support in relation to the domestic violence and assist you to link with disability support agencies and advocacy services.

### Information for women from a CALD Background

As a woman from a culturally and linguistically diverse background who has experienced domestic violence you may be feeling extremely vulnerable and isolated. You may also have experienced challenges and barriers in finding out about what to do or where you can get help. You may also be concerned about your residency or citizenship status and what might happen if you report the violence.

A specialist Domestic Violence service can provide support, information and referral and can assist you using a professional interpreter if you want to. There are a number of other agencies such as The Immigrant Women's Support Service that have information available in languages other than English. Their contact details are in the back of this book.

## Information for Women in Same Sex Relationships

Domestic Violence in LGBT relationships is estimated to occur at approximately the same rates as heterosexual relationships. It is believed that incidents of violence are often unreported because women are reluctant to reveal their sexual identity or seek support from systems that are challenged by and not set up to support individuals who do not identify as straight or within existing gender constructs.

Women who are in same sex relationships who are experiencing domestic violence may be threatened by "outing" as a means of control and coercion. They may also be concerned about seeking support, fearful of their privacy and the impact on their relationships with families, workplaces and friends.

**While the tactics of power and control are the same for same sex and heterosexual relationships other tactics particular to same sex relationships include:**

**Using Emotional Abuse** by humiliating you and questioning whether you are a "real" lesbian or woman

**Using Coercion and Threats** and threatening to out you to family, friends and colleagues or threatening to leave, harm themselves or suicide

**Denying, Minimising and Blaming** by accusing you of mutual abuse and trying to normalise it as normal behaviour in same sex relationships

**Using Privilege** by defining roles or duties in the relationship and using the systems against you to cut off or limit your access to resources

**Using intimidation** by looks and actions used to reinforce homophobic or transphobic control

**Using isolation** and acting jealously about past partners and saying no-one will believe you about the violence or trust you because you are lesbian, gay, transgender or bisexual

**Using Children** by threatening to tell the authorities or ex-spouse that you are lesbian, gay, transgender or bisexual and making you feel guilty about the children.

## What about women who use Violence?

**Whilst the use of violence is never condoned it is helpful to understand that the violence used by women against their male partners can take several forms:**

**Self-defence** when a woman uses as much force as is reasonably necessary to defend herself against an assault in an effort to protect herself from further violence.

**Retaliatory violence** describes a situation where a woman hits back after experiencing a long history of violence and abuse from her partner. Although she may use violence in this incidence, she is not the most powerful or most dangerous person in the relationship. She may continue to fear for her safety.

There are a small percentage of relationships where women use violence as a pattern of abuse using power and control against their partners. However, statistics compiled from Police reports, Hospital Accident and Emergency Departments, Court data, and Domestic Violence Counselling Services suggests these types of relationships are only a small minority.

As it is for women, it can be difficult for men to reach out to seek help to become safe as they may feel ashamed or are embarrassed to talk about it.

## Domestic Violence during Pregnancy

Unfortunately for many women, pregnancy can be the beginning or escalation of domestic violence in their relationship. Research has shown that many women experience domestic violence during pregnancy and for some women their first experience of domestic violence occurs during their pregnancy.

If you are pregnant, the abuse is dangerous not only to you but also to your baby, especially if you sustain a blow to the abdomen. Studies show that intimate partner violence during pregnancy is associated with an increased risk of miscarriage, low birth weight babies and fetal injury or even death.

**Further studies also show that women who experience violence during pregnancy have an increased risk of experiencing post-natal depression.**

### Warning signs

- Does your partner act like he is jealous of the baby?
- Does your partner threaten to take your baby when it is born?
- Does your partner try to harm your baby by striking, pushing, poking or twisting your stomach?
- Does your partner prevent you from seeing your doctor or obstetrician?
- Does your partner question the paternity of the baby saying he is not the father?
- Does your partner call you names such as “stupid”, “bitch”, “fat”, “ugly”?

If you recognise any of the warning signs then you may be in a dangerous situation. You can call a specialist Domestic Violence Service for support, counselling, and referrals to local resources.

**“Domestic Violence is relatively common during pregnancy.”**

(Burch and Gallop 2004)



## Effects of Domestic Violence on Children

The effects of domestic and family violence are experienced by all family members. Children who witness violence experience the same fear, intimidation and threat to their safety that you experience.

Children can be witnesses to violence, experience the violence and may be co-opted into perpetrating violence.

### Studies show that children who witness domestic violence are more likely to:

- Display aggressive and/or socially inappropriate behaviours
- Have diminished self-esteem and self-worth
- Have poor academic performance, problem solving skills and concentration
- Show emotional distress, phobias, anxiety or depression
- Have physical illness or concerns

### As a consequence of the violence they may:

- Avoid having friends over in case violence occurs
- Be distrusting of adults
- Feel guilt, shame and feel responsible for the violence and for stopping it
- Learn inappropriate behaviours
- Copy the aggressive behaviour of the perpetrator
- Learn to comply, keep quiet and not express feelings
- Learn to keep secrets and “keep up appearances”

“Children who live with and are aware of violence in the home face many challenges and risks that can last throughout their lives.”

(Behind Closed Doors, Unicef 2008)

## Impact of Domestic Violence on Parenting

When domestic violence occurs in a family there is an impact on the mother and child relationship. As a mother your confidence in your parenting abilities and your connection with your children may have been negatively affected. The way that you mother and nurture your children may have had to change in order to keep your children and yourself safe.

### The perpetrator may also be actively undermining you as a mother and your relationship with your children. Tactics used may include:

- Preventing you from attending to your baby or child when they need help or comfort
- Putting you down or ridiculing you in front of them
- Co-opting them into insulting you eg “Tell mummy how stupid she is”
- Undermining her authority by making statements like “It doesn’t matter what mummy said I am the boss in this house”
- Blaming the mother for bad things happening eg. “it’s all mummy’s fault ....”
- Telling the children that the mother doesn’t love them or care for them
- Hurting the children and stopping the mother from protecting or soothing them
- Bribing with gifts and treats and comparing themselves to the mother – “mummy doesn’t buy you these – only daddy takes you to fun places”, etc.

### In order to rebuild your relationship with your children you can:

- Work at keeping the channels of communication open by being present and listening to their concerns
- Let your children know that you love them
- Take time to do fun things as a family
- Model non-violent problem solving techniques
- Reinforce positive behaviours
- Encourage and support your children if they want to get counselling
- Design a safety plan with your children.



It is ok and normal for adolescents to demonstrate healthy anger conflict and frustration as they move from childhood through to adulthood, anger should not be confused with violence. Violence is about behaviour and it may take the form of nonphysical, abusive behaviour or physical violence that is intended to have power and control over their mother and siblings.

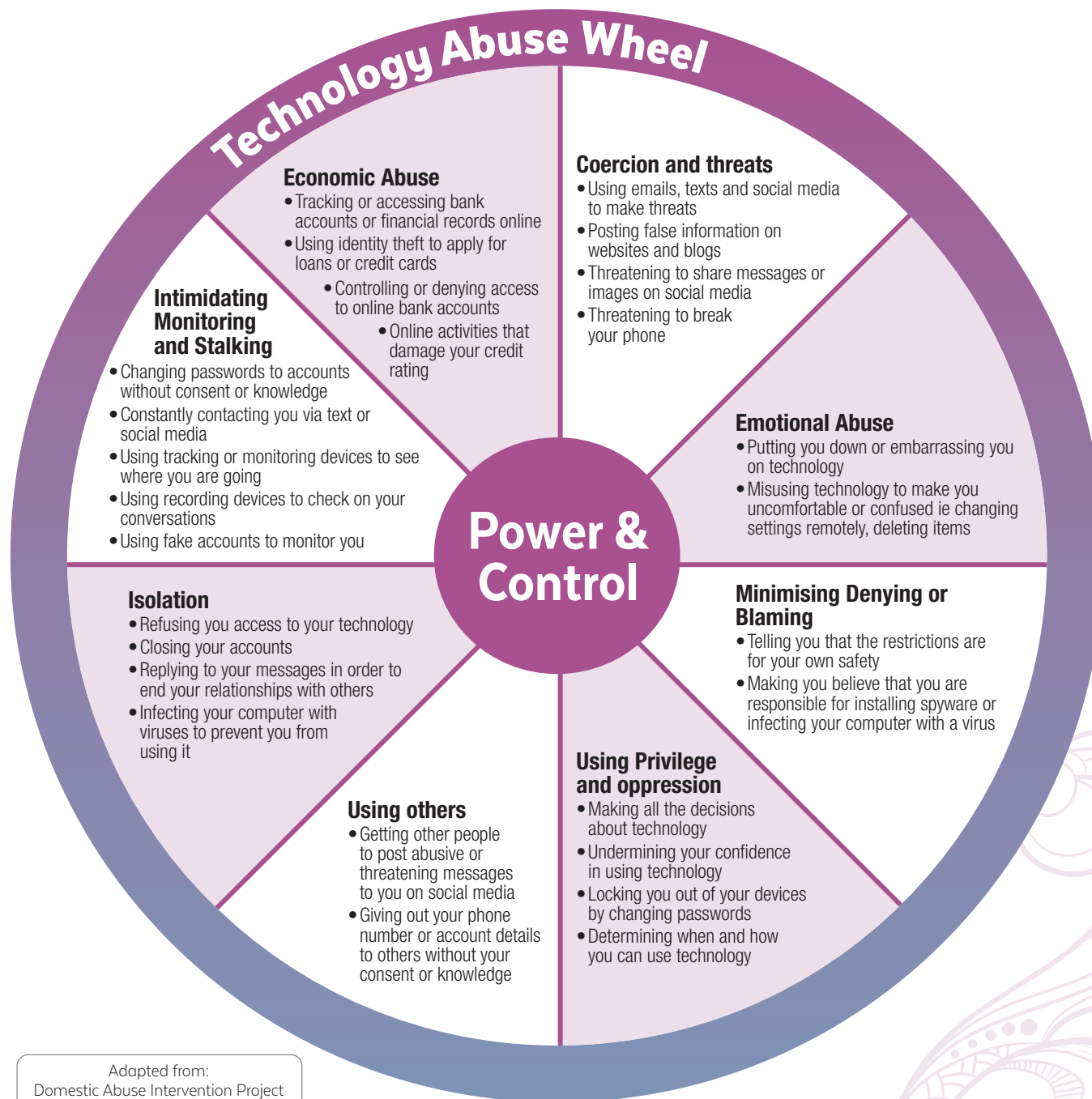
### Abusive behaviour may include:

- Yelling, screaming and swearing
- Making intimidating and insulting comments
- Belittling and humiliating comments or behaviour
- Playing mind games such as threatening to run away or hurt themselves
- Pushing, hitting, throwing objects
- Breaking property
- Hurting pets

Many parents feel ashamed, disappointed and upset if their child is abusive and find it hard to admit that their child is acting violently. They may be fearful and feel like they are walking on eggshells and change their behaviour to avoid conflict. Many parents also feel conflicted and are reluctant to seek support or call the police. Many mothers feel alone, guilty and a failure as a mother.

Adolescent abuse shares many characteristics with domestic violence perpetrated by an intimate partner as it uses power and control and is cyclical in nature. As with domestic violence, you may need to develop a safety plan in place to increase your safety. Although it may be challenging, do not keep the abuse secret or take responsibility for the violence.

Family violence can also occur between siblings and across generations, parent to adult child and adult child to older parent. Many of the tactics used by the person are the same or can be very similar to those used by perpetrators of domestic violence and can include physical, emotional, psychological, social, financial and sexual abuse. Violence in any relationship is not acceptable. If you are concerned about violence and abuse in your intimate or family relationships, seek support from a specialist domestic violence service.



Keeping your details and whereabouts restricted can be difficult especially if you use social media to share information or photos.

To avoid unintended sharing of information about you on social media such as Facebook, Instagram or Snapchat you need to:

- Do not have location services switched on in your phone or ipad or any other device that you use to photograph, make calls or send messages
- Ensure your privacy settings are set appropriately on Facebook so that you cannot be tagged in photos without your permission and your posts shared to people you do not want
- Do not accept friend requests from people you do not know or do not know well
- Speak to people that you are friends with on Facebook and tell them what you want and block people who are not willing to meet your requests
- Logout every time you access social media and do not share your passwords with anyone.



## Maintaining your Privacy and Safety

### Keeping your new location private and undisclosed

Some women who have left a violent relationship may choose to keep their new contact details private. This may increase their sense of safety and security. If this is what you want, it is important that you explain this to all the people that you share your new details with and ask that they respect your need for privacy. You may choose to use a post office box address for your mail and on documents. You can also apply to have your address withheld on the electoral role.

### Safety Tips for Smartphones

**Your mobile phone is an important safety device. We suggest you have your phone fully charged and with you at all times. However, your phone can also be used to track your location, to listen in on your conversations and to eavesdrop on your text messages and emails.**

#### To help you stay safe:

- Lock your smartphone and do not give the PIN to anyone.
- Turn off the GPS (location settings) on your phone and Facebook.
- Turn off Bluetooth on your phone when not in use.
- Avoid buying or using a “jail-broken” phone as this phone will be more vulnerable to spyware.
- Talk to close friends and family members; ask them to have their phone on standby in case of an emergency call. You may want to have a ‘safe’ word/phrase to let them know you’re in trouble.
- Memorise useful numbers such as DV Connect QLD (1800 811 811), or NSW DV Hotline (1800 65 64 63) and those of your close friends and family members. Remember, your phone is usually the first casualty in a violent struggle.

Smart phones with internet capability are the most vulnerable to being used to spy and monitor you. Spyware can be installed on a smart phone with relative ease and will enable another person to track calls, location, conversations, emails and browsing history. Spyware can also turn your phone into a microphone, allowing the perpetrator to hear everything you’re saying...even with the phone turned off.

If you are concerned that your phone has spyware installed take the phone to your service provider and ask them to investigate for you.

If you do want to be certain that a conversation is not recorded or overheard you should remove the battery, if possible, from the phone or leave it at another location.

Old fashioned mobile phones without internet capability are still available and cheap and allow you to receive and make calls and are not able to be tracked or hacked.

If you suspect that your partner is monitoring you, **DON'T** suddenly change your phone or computer habits. For example, don't erase your entire browsing history on your computer. Instead, you can browse for jobs, housing or DV support in “incognito” mode, meaning that internet sites you visit will not show up on your history. You can temporarily go “incognito” by pressing CTRL SHIFT N on your computer.

## Section 2

**If you have left or are thinking about leaving the relationship.**



## Leaving a violent relationship

If you are in a domestic violence situation the decision to leave is often a difficult one. After living with domestic violence your self esteem and self-confidence may be low. It may take time to feel positive and hopeful about the future. This is quite normal and to be expected.

Some people think it should be easy for a woman to leave a relationship where domestic violence is happening. The truth is it may be much harder to leave an abusive relationship than a nonabusive one. Some women may also choose not to leave the relationships as they believe this to be their safest option.

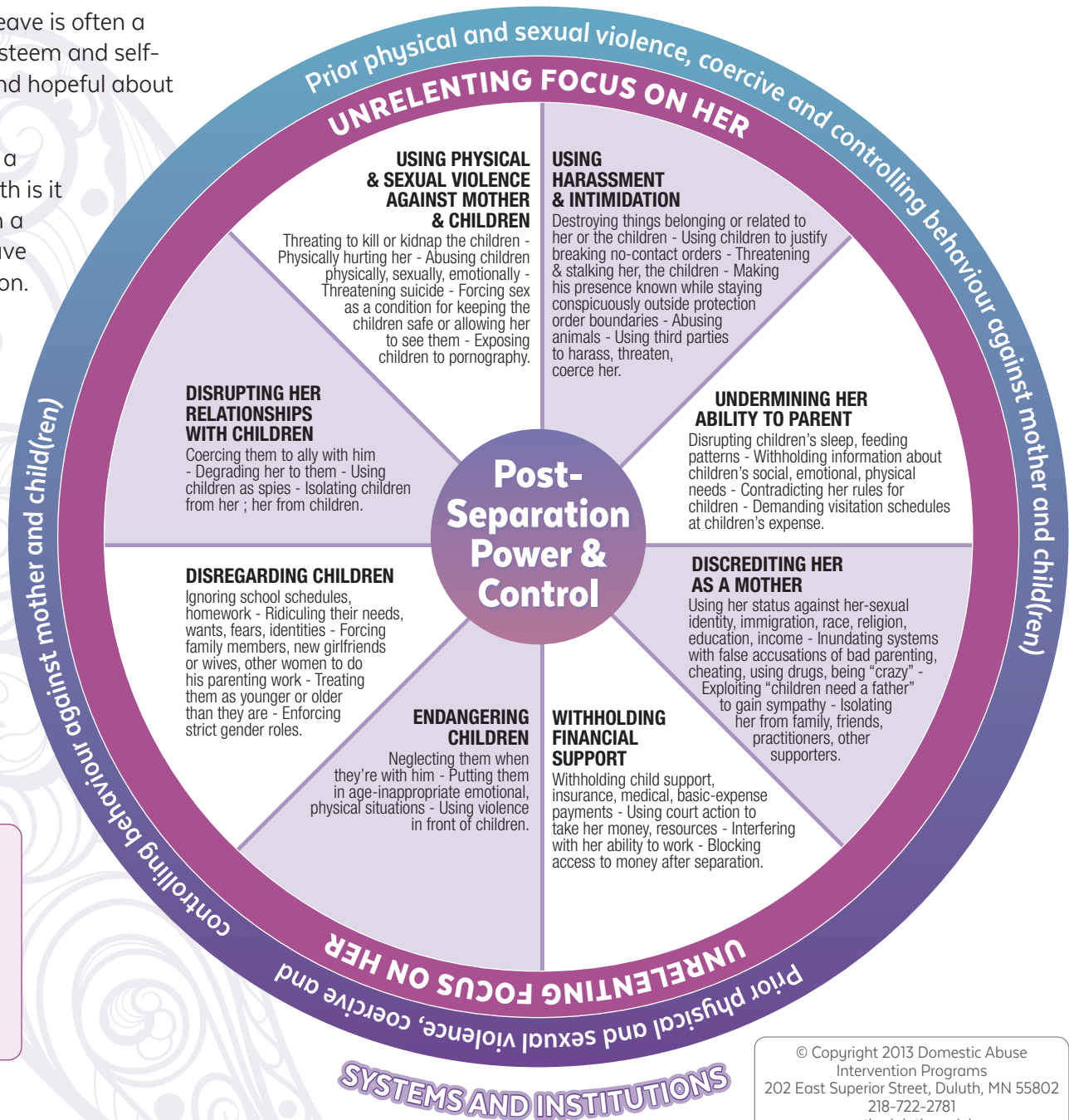
Women may leave and return a number of times before they are able to leave permanently. It is important to realise that leaving does not always mean you will become safe immediately. In fact you may be in the greatest danger from your partner's abuse at the time of separation. Any attempt to leave should be planned with the safety of you and your children in mind.

It is important to remember that whilst the challenges may seem overwhelming, many women have been able to leave abusive relationships and go on to have safe, healthy, happy fulfilling lives for themselves and their children.

### Post Separation Power and Control Wheel

For many women leaving a relationship does not mean the end to the violence and abuse. The violence may escalate and can take on different forms. The Post Separation Power and Control Wheel can help you identify and recognise the tactics your former partner may be using.

## Post Separation Violence



## Safety Planning

If you have decided to leave or have already done so, it is important that you have a safety plan to assist you and your children to be and stay safe. It may be helpful to think about and develop a safety plan prior to leaving, so you will know what to do if you are in a situation in the future where you and or your children are at risk of abuse or violence.

If you have left it is always important to review your safety plan and ensure that it is still relevant to you and your circumstances.

For your safety plan to work it is vital you don't let your partner see the plan, but it is a good idea to talk about it with someone you trust that is close to you.

Your partner may have a sense that something has changed, or may be about to change. It is important that you attempt to keep to your usual routines and activities.

It is important to understand that whilst you can take steps to avoid violence, you cannot stop the violence. The only person who can do that is the person who is violent.

### Before you leave:

- Plan where you could go to be safe such as friends, family or a women's refuge. Always try to take the children with you.
- Only tell friends and family you are sure you can trust of your plans.
- Arrange your transport in advance, a lift from a friend or book a taxi
- Ask your GP to carefully note any evidence of injuries on your records.
- Make a list of personal papers and items you need to take with you. These may include:
  - ☐ Birth certificates for yourself and children
  - ☐ Marriage certificate
  - ☐ Domestic Violence Protection Order
  - ☐ Family Court Orders
  - ☐ Passports for yourself and children
  - ☐ Drivers licence
  - ☐ Insurance policies
  - ☐ Taxation, employment and Income documents
  - ☐ Centrelink card or number
  - ☐ School Records
  - ☐ Medicare card or number
  - ☐ Bank account numbers and statements
  - ☐ Bank Cards, cheque books, credit cards
  - ☐ Department of Immigration & Citizenship documentation
  - ☐ Medical records
  - ☐ Medication
  - ☐ Leases or Mortgages
  - ☐ Car Rego Papers
  - ☐ Jewellery
  - ☐ House keys
  - ☐ Phone numbers incase you cannot take your phone

Keep a small amount of cash to make emergency calls, key cards, house keys, essential medications and important papers together in a place where you can get them quickly or have someone else retrieve them. You may wish to have a copy of these left with someone you trust.

- If you do leave you can request police to accompany you back to the house to retrieve your personal possessions. Do not put your safety at risk to retrieve property or possessions.

## Safety Planning

### After you have left:

- Do you have a current Domestic Violence Order? Are the conditions relevant to you and your current situation? Do you need it amended or varied? If you have a Domestic Violence Order, then keep the paperwork or a screenshot with you at all times, stored in a secure place.
- Inform your children's school and/or child care centre who has permission to collect your child. If you have family court order or a Domestic Violence Order, provide the school/child care centre with a copy.
- Arrange for your mail to be redirected to a post office box instead of your new address if you have moved.
- Consider reviewing your banking and postal arrangements.
- If possible try not to frequent places where you used to go. Use different shops and banks to those you used previously.
- Increase security on your house or unit
- Plan for extra safety between where you park your car and entering your home, e.g. an automatic garage door opener, safety lighting or removal of shrubs or trees in the area.
- Change the locks on your house and ensure the windows are secure. Have security chains fitted to all entry doors and make sure they are used at all times when the door is answered by you or your children.
- Arrange for your phone line to have calling number display/caller id and arrange for a private unlisted number.
- Keep a mobile phone with you at all times and pre-program any numbers you might need in an emergency; including the Police and NSW DV Hotline (1800 65 64 63) or Qld DV Connect (1800 811 811) - 24 hour Refuge Referral Line.
- Vary your travel routes to and from work.
- Tell neighbours that your partner does not live with you and ask them to call the police if he is seen near your house or if they hear an assault occurring.
- Tell your employer if you have a protection order and ask for your telephone calls at work to be screened.
- If your ex-partner breaches the protection order, telephone the Police and report the breach. If the Police do not help, contact your advocate or a legal service for assistance to access support with making a complaint.
- Contact the Australian Electoral Commission and ask for your name and address to be excluded from the published electoral role.
- Contact Centrelink or the Family Assistance Office to notify them of your change in circumstances.
- Attend a woman's domestic violence support group or counselling to help you grow stronger and understand what has happened to you.


## Accommodation Options

Leaving a relationship can be made more difficult when there is the need to consider housing and accommodation. Every person's situation is different and there are now many different options to consider when making plans for the future. Thinking about your options prior to leaving is most preferable but there may be situations where you need to leave in a crisis.

Refuges (sometimes called shelters or safe houses) provide safe and secure accommodation for women and children escaping domestic violence. If you need to access a refuge you can stay for a couple of days if you are returning to your home, or for a couple of months, **each refuge is different so you will need to talk to the workers about their policies**. The location and details of refuges are confidential and not available to the public. It is a condition of entering most refuges that you understand that you cannot reveal the location of the refuge to ANYONE including your family. If there are no places available at the refuge or no refuges in your area, then you may be supported to stay in a motel or hotel for a few days. There are services that can help you access a refuge or motel at any time of the day.

Housing services and specialised domestic violence services may be able to assist you to find a new rental property and the government may be able to provide rental subsidies and bond loans to women who are having to relocate to a new home.

It is possible that you can stay in your home and the perpetrator can leave. If you have a Domestic Violence Order which excludes them from the address of your home, then legally they are required to move out and police can assist them while they remove their belongings. Services are also available to help you to feel safe in your home and can provide security measures to increase your safety.

 Housing services differ from state to state. Many Housing programs are funded by each individual state and you may have difficulty accessing one if you live in another state. Contact details of services are in Section 4. To access crisis housing in Northern NSW call Momentum Collective - 1300 355 305 (24/7) or for state-wide service call Link2Home - 1800 152 152 (24/7) . To access a refuge in Queensland call DV Connect on 1800 811 811 or the Homeless Hotline on 1800 474 753.

Other services that may be able to assist can be found in Section 4 of this booklet.

## Legal Protections


Both Queensland and New South Wales have laws in place that provide protection to people who are experiencing domestic and family violence. Laws provide safety and protection against further acts of violence. It does this by seeking to restrict the behaviour of the person committing abuse or violence.

In Queensland and New South Wales you can apply for a domestic violence order at a Court House by completing an application form. In both NSW and Queensland police can apply for a domestic violence protection order, if they have attended an incident where violence or abuse has occurred, or if you have made a statement. In NSW, sometimes police may take a video statement called a DVEC (Domestic Violence Evidence in Chief), which can be used as evidence in court.

In both instances the application for the order has to be presented in a Magistrate's Court to be made final. This process can be different depending on whether the defendant agrees or disagrees with the order being in place. In some cases it may need to go to a Hearing where evidence from both sides is heard and your video statement may be used. In court there are often specialised domestic violence court advocacy workers that sit in an allocated safe room to assist you during the court process by providing information and advocacy. In NSW this service is called the Women's Domestic Violence Court Advocacy Service (WDVCAS).

A domestic violence order is a civil (not criminal) order made by the Magistrate's Court and the defendant will not have a criminal record as a result. If the defendant breaches the order it then becomes a criminal offence.

There are different conditions which can be included on the Domestic Violence Order (DVO). All DVOs will have a basic condition that the person may not assault, threaten, stalk, intimidate, harass and recklessly destroy or damage property belonging to you. Additional conditions can be added depending on your circumstances. The Domestic Violence Court Advocacy worker and police can assist you to make sure that you have the appropriate conditions on your Order.

 Domestic Violence Orders (DVOs) have different names across Australia. A domestic violence order may be called:

- Apprehended Domestic Violence Order (ADVO) (NSW)
- Protection Order
- Family Violence Intervention Order
- Intervention Order
- Foreign Order (New Zealand)



## Service of a Protection Order

Once a Domestic Violence Protection Order has been made, it needs to be served by police on the Respondent. The order will not be in place until the Respondent is served, and you will not be protected by the order. It may take up to 5 days or longer to serve the order depending on how quickly Police can locate the Respondent. However, if further incidents of domestic violence occur whilst you are waiting for the order to be served, you should still report the incident to the police. Be sure to tell them you have a protection order however you are uncertain whether it has been served.


When you are attending Court, it is recommended that you bring along copies of any paperwork relating to your domestic violence matter and any material relating to Family Law agreements or orders relevant to your children.

New laws were introduced on 25 November 2017 under the National Domestic Violence Order Scheme so that any domestic violence orders (DVO's) that were issued in that state or territory are now recognisable and enforceable nationwide.

If you have a current DVO that was issued prior to 25 November 2017 it can become nationally recognised by applying to a court. It does not have to be in the state or at the Court that the DVO was issued.

Local courts across Australia can also amend a nationally recognised DVO regardless of which state it was issued.

If you have moved to Australia from New Zealand you will need to register your order in Australia by taking a copy of the order and evidence that the order has been served on the respondent, to the clerk of the court at the local courthouse where you reside.

 NSW and QLD use different language on domestic violence orders.

In QLD the Order will refer to the perpetrator of the violence as the 'Respondent' and refer to you as the 'Aggrieved'. In NSW, the Order will refer to the perpetrator as the 'Defendant' and refer to you as the 'PINOP' or Person In Need of Protection.

## Reporting a Breach of the Order

A breach occurs when the Respondent either personally, or through another person, commits any act which disobeys any of the conditions on the order. It needs to be proven that the Respondent knew about the order and the conditions on the order before they can be charged. You will need to report the matter to the police in the state in which you live, and you may be asked to give a statement. This statement would detail what happened, when and where it happened and if there were any witnesses present.

The Respondent can then be charged with a breach of the Domestic Violence Order. It is a criminal offence to breach a Domestic Violence Order. If you believe that your order has been breached, record all details. Try to keep as much evidence as possible including what happened, when and where it happened and the names of any witnesses.

If the police charge the Respondent with a breach of the Protection Order they will be arrested and brought before a Magistrate at the Courthouse. If the Respondent pleads guilty they will be sentenced. Depending on the circumstances of the case, the Respondent may be either given a Fine, ordered to complete a Men's Domestic Violence Education Program, given a community service order or given a prison sentence.

If the Respondent pleads not guilty the matter will be sent to a trial or hearing. If the matter is sent to trial you may be required to give evidence at Court.

### "Safer Pathway"

In NSW there have been changes to ensure that there is a coordinated and streamlined approach from police, courts, and services to assist people experiencing domestic violence. In order to do this new legislation was brought in to help these services share information in certain circumstances, to improve the safety of women and children.

Police or services may ask you questions about your current situation and your partner's history and behaviour. This questionnaire is called a Domestic Violence Safety Assessment Tool (DVSAT) and it helps to identify your level of risk. For people who are at a serious threat of risk, your situation may be discussed at a Safety Action Meeting (SAM) where police and services can implement strategies and plans to ensure yours and your children's safety.



## Staying Safe

Even after leaving a relationship where domestic violence has occurred, many women may find that they may need to continue to stay aware of issues relating to their safety, privacy and confidentiality.

### Family Law

After you have left the relationship you may need to continue having contact with your former partner if he has shared care of the children or has regular contact with them. The conditions that he spends time with the children may be the subject of a Family Law Order or included in a Parenting Plan.

It is important that you are mindful of the children's and your safety at all times. If you are concerned you can arrange to meet in a public place to do the handover such as a police station or a family contact centre. You can also bring a third party for support or to witness if any violence or abuse occurs.

If violence or abuse occurs and you have a DVO, this is a breach and the details need to be recorded and reported to the Police.

If you are concerned about the safety of your children, help them to develop a safety plan. The children's workers at a specialist Domestic Violence service may be able to assist them to do this.

In the event that the children are at risk of violence or abuse if they continue to see the other party, then seek urgent legal advice.

If you decide to leave the family home and move to another area including across the border, it is important you check that you do not breach the conditions of your Family Law Orders.

### Ongoing contact with extended family

Sometimes when you leave a relationship you also place at risk the relationship you had with family members of your former partner. Many people want to maintain contact and connection with the extended family.

If you are hoping to maintain contact, you always need to consider the safety of yourself and the children when making a decision. This decision is also something that you can review if the circumstances change.

You may also choose not to have contact yourself or only limited contact with the extended family but there may be Family Law Orders in place that direct children to maintain contact with their grandparents, aunts, uncles and cousins. It can sometimes be challenging, especially if you are concerned about the dynamics and activities of the family. It is important that you seek advice to ensure that your actions do not breach the Family Law Court Order.

## Looking After Yourself Emotionally

Leaving a relationship can be difficult, even if it was abusive or not. Making the transition can be hard and there will be many challenges you may face. When you have left an abusive relationship it is important that you get support to help you deal with your experiences to assist you through any legal processes and to help keep you and your children safe.

When you leave a relationship, you may feel the loss of identity and mourn your relationship.

It might take some time before you start to feel safe and confident to make decisions about your future, concerned that you might make mistakes. You may feel your emotions very strongly and might experience feelings of anger, betrayal, grief, joy and freedom. The feelings you are experiencing may be overwhelming, contradictory and unexpected. This is very normal and these feelings are just part of the transition process.

### Some of the feelings you may experience are:

**GRIEF** - This is part of letting go of a relationship and all the plans, hopes and dreams associated with it. Even if the relationship was violent there may be good things about the relationship and your former partner that you will mourn.

**EUPHORIA** - You might experience a sense of euphoria that could last for weeks or months after you have left the relationship. It can energise you and make you feel that you have made the right decision. This euphoria may be followed by anger or depression.

**ANGER** - You might be surprised by the intensity of the anger you may feel, after keeping it bottled up during the relationship. You may also feel frightened by the level of rage, however it is normal and is just part of the process you are undergoing. Anger can be used constructively to motivate and empower. Talk about your anger and be careful that you do not use it negatively for revenge or harm. This could lead to negative consequences for you.

**ANXIETY** - When you are in a violent relationship you may experience anxiety about what your partner will do however you may continue to feel anxious even after the relationship has ended. As you gain more control over your life and become more comfortable with making decisions your anxiety may decrease.

**LONELINESS** - After leaving the relationship you may find that you have very few connections with people and feel lonely and isolated. Over time you may have lost contact with friends and family or have had to relocate to a new area to be safe. You may be concerned about making new friends and struggle to know who to trust. As impossible as it seems the loneliness will pass as you make new relationships or renew old ones. Loneliness can often be a key reason for women returning to the relationship.

## Looking After Yourself Emotionally

You may also experience a range of physical symptoms. These may include sleep disturbances, changes in heart rate, diarrhoea, constipation, menstrual changes, weight loss, weight gain, skin conditions, hair loss, heartburn and nausea. You may also have poor concentration, poor memory, indecisiveness, irritability. As every woman's experience and journey is unique, it will be different for everyone. It is a time to look after yourself and treat yourself with kindness and compassion. You may find it helpful to talk to a health professional or people in your life who are supportive.

You can also talk to your GP about a Mental Health Care Plan. These plans can help you access counselling sessions with a local Psychologist or Social Worker who are registered with Medicare. The sessions may be free or have a small gap payment depending on the provider. Each one is different so make sure you talk to them about any fees or charges.

If you require support after hours there is a national phone line 1800 RESPECT (1800 737 732) that you can also call for support and counselling.

The Tweed Shire has a number of different counselling services that can assist you. Community Health have Social Workers who work specifically with domestic violence and sexual assault. Free counselling by an Approved Counsellor is available to primary, family and secondary victims of an act of violence through Victims Services NSW. The contact numbers can be found in Section 4.

### **I feel like I want to return to the relationship**

After leaving your relationship you might have feelings of remorse and regret and consider reuniting with your former partner. This might be motivated by loneliness, fear, pressure from friends or family or your former partner, concerns about your children and feeling overwhelmed and uncertain about the future.

It is important at this time to stay connected to your support networks and agencies that are supporting you. Specialist Domestic Violence services will understand the challenges you may be facing, the emotions you are feeling and will be respectful of your choices. They can provide you with support to assist you to understand that this too is part of a process, help you to recognise the growth that you have undergone and help you imagine a safe future for you and your family.

## Section 3

If you are still in the relationship

## Choosing to Stay and being Safe

You and your children's safety is extremely important regardless of whether you choose to leave or stay in the relationship. Women make the decision about staying in or leaving relationships for many different reasons. Some women may choose to stay in a relationship as they consider it to be the safest option.

A specialist Domestic Violence service can work with you to increase your safety while you are still residing with your partner. The service will be respectful of your choices and if you seek support you will not be pressured to do anything that you are uncomfortable with. The service will work with you to plan for the safety of you and your children and to understand the dynamics of a relationship in which domestic violence occurs.

It may be helpful to think about and develop a safety plan in advance so that if at any time you decide to leave, you are prepared.

For your safety plan to work it is vital you don't let your partner see the plan, but it is a good idea to talk about it with someone you trust that is close to you.

It is important to understand that while you can take steps to avoid violence, you cannot stop the violence. The only person who can do that is the person who is using violence.

### A plan to avoid serious injury during a violent incident

- If possible leave the situation
- Know the easiest escape routes from the house doors, windows etc.
- Plan where you will go in advance.
- Have a safe place to stay organised in advance.
- Identify a neighbour you can ask to call the police if they hear a disturbance coming from your house. Develop some sort of a code or signal between you so that they will know you are in danger.
- Teach your children to phone 000 and practice what to say.
- Have the 24 hour state-wide DV service numbers memorised (Qld - DV Connect 1800 811 811 or NSW - DV Hotline 1800 65 64 63) or in a place that is easy to find.
- Call the Police as soon as it is safe to report the incident. The police can also support you to access safe accommodation for you and your children.

**Children may also need a simple safety plan so they know what to do when domestic violence is occurring, this could include:**

- Warning children to stay out of the adult conflicts.
- Decide ahead of time on a safe place the children can go when they feel unsafe.
- Teach children how to use police and other emergency phone numbers.
- Making a list of people the children can trust and talk to when they are feeling unsafe (neighbours, teachers, relatives, friends).

## Getting Support


If you are experiencing domestic violence, getting the right assistance and support you need is important. You and your child's safety needs to be the first consideration.

Not everyone understands domestic violence and the dynamics which occur in an abusive relationship. Be aware of individuals who are dismissive of your needs and concerns or discount or minimise your experiences. Trust your instincts and if you do not relate well to the person or feel they are not taking your issues seriously seek support elsewhere.

Many women seek support and information from their GP or from other community based agencies that provide counselling. Because domestic violence is a complex issue, it is recommended that you seek support from a specialist domestic violence service. In Queensland, the Domestic Violence Prevention Centre Gold Coast can provide counselling by phoning 07 5532 9000. In NSW, the Domestic Violence Hotline can provide advice and referral to a local counselling service by phoning 1800 65 64 63.

If you require support after hours there is a national phone line 1800 RESPECT (1800 737 732) that you can also call for support and counselling.

Counselling can assist you to make sense of your experience of the domestic violence and the effects of violence or abuse on you and your children. Counselling, however, cannot help you to change the person who perpetrated the violence or abuse or identify strategies to stop them perpetrating again.


 Queensland and New South Wales provide different types of support and counselling services. The contact numbers are listed in Section 4.



## Legal Protection

### Can I still get legal protection if I am still in the relationship?

Just because you remain in a relationship does not mean that you are exempt from obtaining a domestic violence order to protect you. You are still able to seek a domestic violence order instructing your partner not to use violence against you or your children.

 If you need assistance in obtaining a domestic violence order, then the Women's Domestic Violence Court Advocacy Service (WDVCAS) in NSW or the DVPCGC Inc. in Queensland can provide information and referral to assist you in this process. The contact numbers are listed in Section 4.


### Child Protection Issues

Police and Child Protection agencies could become involved with your family and express concerns about the domestic violence that is occurring and the impact on the children.

They may make contact with your family as a result of a notification to the agency responsible for child protection. It is possible that this involvement may have positive outcomes for you and your children.

It is important to remember that throughout any interactions with child protection workers, you are able to seek support and express your needs and seek clarification and information.

If you have legal concerns seek legal advice. Contact numbers for Legal Aid and Community Legal services are in the back of this booklet.

 Each state has a different government agency which provides protection for children. In NSW it is the Department of Communities and Justice and in Queensland it is the Department of Child Safety, Youth and Women. If you are concerned about the safety of your children whilst they are in another state, you can report your concerns to the government agency in that state. The contact numbers are listed in Section 4.

## Can the person using violence change?

### What about Couples Counselling?

Sometimes people think 'couples counselling' is appropriate for domestic violence but in fact as a form of addressing abuse and violence it is ineffective and can be dangerous. Couples counselling can reinforce the illusion that abuse is a 'relationship problem' and not a 'use of abuse' problem. A 'therapeutic' environment may also create a false sense of security for the victim to express her thoughts that she otherwise may not feel safe to do. Unfortunately, this openness may be 'punished' with more violence at home. Couples or relationship counselling should only be considered after all forms of violence and abuse have stopped and there is no longer any fear of retaliatory violence.

### What about anger management programs?

The person using violence may offer or be encouraged or recommended to attend an anger management program to address their use of violence.


It is now widely accepted that domestic violence is not about anger, but instead is more about the abuser's desire to control their partner through any means that will work. Anger management programs do not address the fundamental causes of domestic violence, nor do they focus on safety of the victim or hold the perpetrator accountable for their violence.

### Programs

People who are being abused are always hopeful that the perpetrator of the abuse will change. Although people who use coercive control and abuse are capable of stopping doing so, it is unlikely that their participation in an Intervention Program will result in this unless they choose to change their behaviour.

Programs for people who use violence in their relationships are designed to address the attitudes, beliefs and actions that underpins and supports them to use violence and coercive control.

There are a range of different programs available, some of which are attended only by people ordered by the Courts while others are voluntary. Attendance may be a condition on their order.

 In the Tweed Shire, the Men and Family Centre provide men's behaviour change programs. All partners and ex-partners of men who attend are automatically offered support and information by a Women's Support worker.



It is important to know that not all Perpetrator Programs operate in the same way. If a person is attending a group because of their abuse towards you, you may be able to contact the agency delivering the Program to understand how it is delivered and what content is in the Program. You can also ask if they provide a women's advocate to support you while the person is attending the Program.

### Coping with Pressure from Friends and Family

For many people it may be difficult to understand your decision to stay in a relationship in which domestic violence occurs. They may put pressure on you to leave, threaten to withdraw their support or refuse to have contact with you until you go. This can be very upsetting and make you feel angry or isolated.

You may have left and returned to the relationship, and this can be perplexing and upsetting to people who care about you and want a different life for you and your children.

Alternatively you may be staying in the relationship because of economic concerns or pressure from family, society or from members of religious or cultural communities you are associated with.

It is unlikely that you will be able to make another person understand your relationship. The decision to stay in a relationship can be based on many factors, however the decision is yours to make.

“Regardless of your decision to remain in the relationship or to leave it, your safety and that of your children is of paramount importance.”

## Section 4

### Contacts

💡 For local **Tweed** services we have used the **(T)** symbol  
For local **Queensland** services we have used the **(Q)** symbol  
For **NSW** state-wide services we have used the **(N)** symbol  
For **Australia-wide** services we have used the **(A)** symbol

## Useful Contact Numbers

### WOMEN'S SUPPORT SERVICES

Women's Domestic Violence Court Advocacy Service - advocacy, information & referrals to women	02 6621 1044	(T)
Women's Domestic Violence Court Advocacy Service - Tweed and North East Queensland Area	1300 720 606	
DVPCGC Inc. Domestic Violence Prevention Centre Gold Coast - counselling, advocacy and support	07 5532 9000	(Q)
DV Hotline NSW	1800 65 64 63	(N)
DV Connect Qld	1800 811 811	(Q)
1800 RESPECT - National Sexual Assault Domestic and Family Violence Counselling Service	1800 737 732	(A)
Crisis & Case Management Support for Women	1300 355 305 (24/7)	(T)

### EMERGENCY SERVICES

Emergency 000 (landline) or 112 (mobiles)	(A)
---	-----

### POLICE

Tweed DVLO	07 5506 9499	(T)
Tweed Police	07 5506 9499	(T)
Murwillumbah Police	02 6672 9499	(T)
Kingscliff Police	02 6674 9399	(T)
Coolangatta Police	07 5589 8444	(Q)
Australian Federal Police (Brisbane)	07 3222 1222	(A)

### HOSPITALS

Tweed Hospital	07 5506 7000	(T)
Murwillumbah Hospital	02 6672 1822	(T)
Gold Coast University Hospital	1300 744 284	(Q)

## Useful Contact Numbers

### MEN'S SUPPORT SERVICES

The Family Centre - support for male victims of domestic violence	07 5524 8711	(T)
Men and Family Centre - Men's Behaviour Change programs	0422 195 003	(T)
Men's Line Australia - telephone and online counselling service for men	1800 600 636	(A)
Men's Referral Service - referral to men's services	1300 766 491	(A)

### HOUSING SERVICES

NSW Department of Communities and Justice (Housing Services)	07 5524 0666	(T)
North Coast Community Housing	07 5523 5800	(T)
Link2Home - NSW state-wide housing referral	1800 152 152	(N)
Qld Department of Housing (Robina)	07 5645 8100	(Q)
Momentum Collective Support for women at risk of, or homeless due to domestic violence	1300 355 305 (24/7)	(T)
CONC Staying Home Leaving Violence (SHLV)	02 6684 4299	(T)

## Useful Contact Numbers

### LEGAL SERVICES

WDVCAS - court support for ADVO	02 6621 1044	(T)
Legal Aid Lismore NSW	02 6621 2082	(T)
NRCLC - Northern Rivers Community Legal Centre	02 6621 1000	(T)
Tweed Court	07 5508 5000	(T)
Murwillumbah Court	02 6672 5677	(T)
Northern Rivers Tenancy Advice and Advocacy Service	1800 649 135 or 02 6621 1022	(T)
Legal Aid and Women's Legal Aid Qld	1300 651 188	(Q)
Women's Legal Service (Qld)	1800 957 957	(Q)
Southport Magistrates Court	1300 516 700	(Q)
Tenancy Advice and Advocacy Service - GC	07 5591 1102	(Q)
Law Access NSW	1300 888 529	(N)
Aboriginal Legal Service NSW - Northern Rivers	02 6623 4400	(N)
Women's Legal Service NSW		(N)
Legal Advice Line	1800 801 501	
Domestic Violence Advice Line	1800 801 784	
Indigenous Women's Legal contact line	1800 639 784	
Care & Protection Legal Advice line	02 8745 6908	
Police Complaints NSW	1800 622 571	(N)

### MULTICULTURAL SERVICES

North Coast Settlement Service - St Vincent de Paul	0435 659 829 Monday to Wednesday	(T)
Immigration, Advice & Rights Centre (IARC)	02 8234 0700	(N)
Support Assessment Referral Advocacy (SARA) - specialist D&FV multicultural program on Gold Coast	0405 065 544	(Q)
Immigrant Women's Support Service (IWSS)	07 3846 3490	(A)
Translating and Interpreting service (TIS)	131 450	(A)
Department of Immigration and Citizenship (DIAC)	131 881	(A)

## Useful Contact Numbers

### ABORIGINAL AND TORRES STRAIT ISLANDER SERVICES

Bugalwena Health Service	07 5506 7597	(T)
Krurungal Service	07 5536 7911	(Q)
Kalwun	07 5578 3434	(Q)

### COUNSELLING AND FAMILY SUPPORT

Community Health Tweed Heads (NSW Health)	07 5506 7540	(T)
Community Health Murwillumbah (NSW Health)	02 6670 9400	(T)
Tweed Valley Sexual Assault Service (NSW Health)	07 5506 7540 (BH) 07 5506 7445 (AH)	(T)
The Family Centre - Child, Adol & Family Support	07 5524 8711	(T)
Family Relationship Centre (Interrelate) - mediation/contact centre	02 6622 7003	(T)
Pottsville Beach Neighbourhood Centre	02 6676 4555	(T)
Mental Health Access Line	1800 011 511	(N)
NSW Victims of Crime - approved counselling scheme	1800 633 063	(N)
Domestic Violence Prevention Centre GC Inc.	07 5532 9000	(Q)
1800 RESPECT	1800 737 732 (24hr)	(A)

### NATIONAL AND STATE-WIDE HELPLINES

DV Hotline NSW	1800 65 64 63	(N)
Child Protection Helpline (NSW)	132 111	(N)
DV Connect Qld	1800 811 811	(Q)
Child Safety Helpline (Qld)	1800 177 135	(Q)
1800 RESPECT	1800 737 732	(A)
Lifeline	131 114	(A)
Parentline	1300 130 052	(A)
Kids Helpline	1800 551 800	(A)
Family Relationship Advice	1800 050 321	(A)

## Useful Websites

DVPC GC Inc  
[www.domesticviolence.com.au](http://www.domesticviolence.com.au)

1800 RESPECT  
[www.1800respect.org.au](http://www.1800respect.org.au)

Domestic Violence:  
It can happen to anyone  
[www.domesticviolence.nsw.gov.au](http://www.domesticviolence.nsw.gov.au)

Family Law information  
for parents and children  
[www.bestforkids.org.au](http://www.bestforkids.org.au)

Information for  
Same sex relationships  
[www.anothercloset.com.au](http://www.anothercloset.com.au)

Information for teenagers  
about domestic violence  
[www.burstingthebubble.com](http://www.burstingthebubble.com)

NSW Legal Aid  
[www.legallaid.nsw.gov.au](http://www.legallaid.nsw.gov.au)

Law Access  
[www.lawaccess.nsw.gov.au](http://www.lawaccess.nsw.gov.au)

Victims Services  
[www.victimsservices.justice.nsw.gov.au](http://www.victimsservices.justice.nsw.gov.au)

Elder Abuse Prevention Unit  
[www.eapu.com.au](http://www.eapu.com.au)

Department of Home Affairs  
[www.immi.gov.au](http://www.immi.gov.au)

Immigrant Women's  
Support service  
[www.iwss.org.au](http://www.iwss.org.au)

Tenancy Advice &  
Advocacy Service  
[www.tenants.org.au](http://www.tenants.org.au)

Wesnet - technology advice  
[www.wesnet.org.au](http://www.wesnet.org.au)

## Useful Apps



### Daisy

Daisy is an app made by 1800 RESPECT to connect women to support near them.



### Sunny

Sunny is 1800 RESPECT's app for women with disability who have experienced violence and abuse.



### Aurora (NSW)

Aurora was developed by the NSW Department of Communities and Justice.



### Refocus (Queensland)

The Re-focus app was developed by the Women's Legal Service and offers information for women about separating from an abusive partner.



### Penda

Penda is a financial empowerment app for women, with a domestic and family violence focus.

## Reference List

- Burch RL & Gallup GG 2004, 'Pregnancy as a Stimulus for Domestic Violence', *Journal of Family Violence*, 19(4): 243-7.
- Campbell, J., Jones, A. S., Dienemann, J., Kub, J., Schollenberger, J., O'Campo, P., Gielen, A. C. & Wynne, C. 2002, 'Intimate partner violence and physical health consequences', *Archives of Internal Medicine*, vol. 162, no. 10, pp. 1157-1163.
- Dept. for Child Protection and Family Support, Western Australian Government; 2013, *Practice Guidelines: Women and Children's Family and Domestic Violence Counselling and Support Programs Western Australian Edition*.
- Unicef ; 2008, *Behind Closed Doors - the impact of domestic violence on children*.

## Disclaimer

Information in this publication should not be regarded as a substitute for specialist domestic violence or legal advice. The information provided in this book is offered as a guide only.

The Domestic Violence Prevention Centre Gold Coast Inc. accepts no responsibility for any loss or risk suffered by any person as a consequence of using or relying on the information contained in this booklet, or for any loss or risk which may arise due to an error or omission in the information.

All contact numbers and addresses contained within were current and correct at the time of printing (September 2019).



